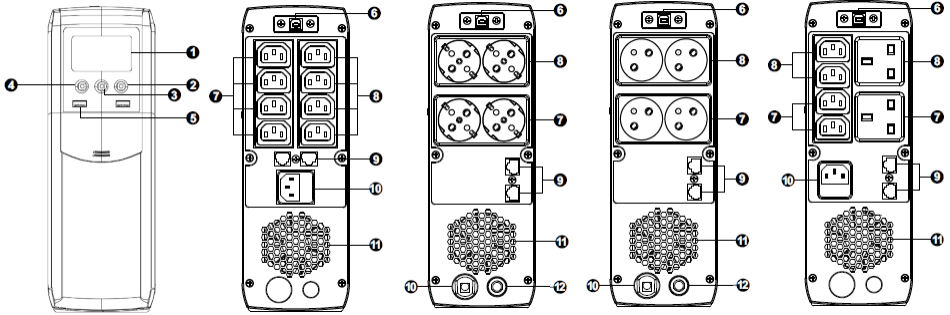


PowerWalker VI 600-1500 CSW

Quick Guide

I. Overview:



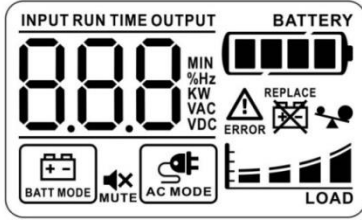
- | | | |
|---|--|---|
| 1. LCD display | 6. USB Communication port with HID support | 9. RJ-45 surge protection (i.e. for Internet) |
| 2. Up/down button | 7. Surge-protected outlets (no battery backup) | 10. AC input |
| 3. Mute button | 8. Battery backup with surge protected outlets | 11. Ventilation and fan. |
| 4. ON / OFF button | | 12. Circuit breaker (for French and Schuko) |
| 5. USB charging port (5V / 2.1A shared between 2 ports) | | |

Surge-protected outlets offer EMI filtering, line conditioning and surge protection, but they are not supported with backup power from battery in case of AC failure.

II. Operation

Button	Function
ON/OFF button	Press and hold the On/Off Button for 2 seconds and then release to change state between Standby (output is off) and Line (output is on).
Mute button	Press and hold the Mute button for 1 second and then release to mute or unmute the alarm.
Up/down button	Click to switch displayed information.

III. Display



State	Display	Meaning	LED	Alarm
Line / Standby / Battery mode		Input voltage, input frequency, battery voltage, battery Power, Backup time, output voltage, output frequency, load Power and load percentage. k: kilo, W: watt, V: voltage, A: ampere, %: percent, degC: centigrade degree, Hz: frequency, min: minute		
Line Mode		The UPS is connected to AC input.		
AVR Mode		When the icon is flashing, the UPS is regulating the voltage (reducing or increasing the voltage).		
Battery Mode		The UPS is running on battery		every 10 s
All Modes		The UPS alarm is disabled.		
All Modes		Battery level in ranges 0-24%, 25-49%, 50-74%, and 75-100%.		
Battery Mode		Low Battery	every 0.5s	every 1s
All Modes		Load level in ranges 0-24%, 25-49%, 50-74% and 75-100%.		
All Modes		Indicates overload.	every 0.5s	every 0.5s
All Modes		Battery replacement needed or the battery is not connected	Continuous	every 2s
Fault		Fault code (here: E14). Check troubleshooting for details.		Continuous
Warning		Battery voltage is too high (i.e. wrong battery inserted)		every 1.5s

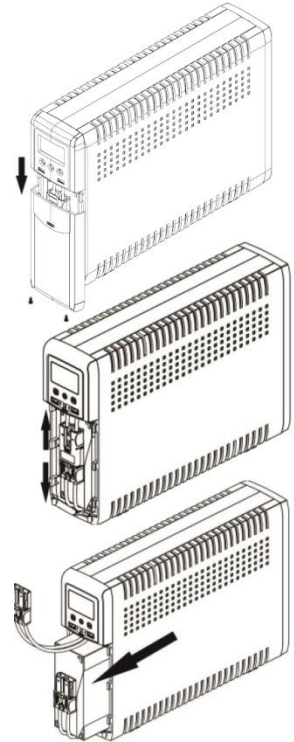
IV. Battery Replacement

1. Turn off the connected equipment and unplug it from the UPS
2. Turn off the UPS and unplug the input cable.
3. Remove two screws located on the bottom of the UPS and slide the battery cover downward, then outward.
4. Disconnect the battery connector.
5. Slide out the existing battery pack from the UPS by grasping the battery pull tap.

Caution - Do not short the positive wire and negative wire of battery.

Caution - DO NOT pull the battery pack out by pulling on the battery wires.

6. Slide the new battery pack into the UPS.
7. Verify proper polarity. Re-connect the battery connectors together.
8. Reinstall the battery cover onto the UPS. Now, the UPS is ready for normal operation
9. Properly dispose of the old batteries at an appropriate recycling facility or return them to the supplier in the packing material for the new batteries.



Please read all of the WARNINGS and CAUTIONS in the General Manual before replacing the batteries.

V. Troubleshooting

Fault	Event
E12	Battery mode output high (internal fault)
E14	Output short (check the loads)
E15	Output over current (too much load)
E20	Fan lock fault
E21	Over Charge Voltage (i.e. wrong battery used)
E28	Low battery voltage
E43	Overload fault

Please check <https://troubleshoot.powerwalker.com> for more details.

VI. Technical Specification

VI CSW Series	
Input Voltage	230VAC
Input Voltage Range	162~290VAC
Output Voltage Regulation	+/-10% (Batt. Mode)
Transfer Time	Typical 6 ms, 10 ms max.
Waveform	Pure Sine Wave
Charging Time	4-6 hours recover to 90% Power
Humidity	0-90 % RH @ 0-40°C (non-condensing)

Model	VI 600 CSW	VI 800 CSW	VI 1000 CSW	VI 1200 CSW	VI 1500 CSW
POWER	600VA / 360W	800VA / 480W	1000VA / 600W	1200VA / 720W	1500VA / 900W
Batteries	12V/7Ah x 1	12V/9Ah x 1	12V/10Ah x 1	12V/7Ah x 2	12V/9Ah x 2
Dimension (DxWxH)	288x99x280 mm			410 x 99 x 280 mm	
Net Weight (kg)	7.4	7.9	8.5	11.8	13.1

*Specifications are subject to change without notice.